

IMPORTANT INFORMATION - PLEASE READ

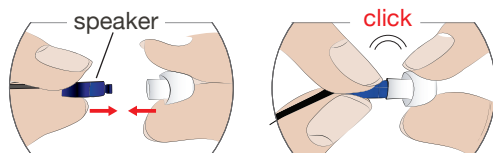
1 Selecting the correct Tip size

Watch video  <https://www.ihearmedical.com/treo-video-1> | 



Determine your Tip size by using the Closed Tip - use only Closed Tip to start.

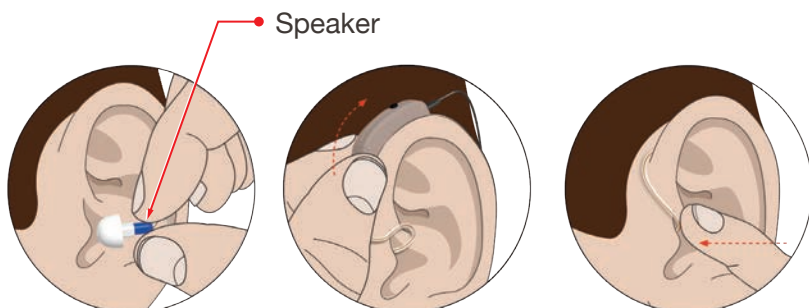


 Tip(s) should be securely attached to the speaker.



 Start with the Tip already attached to your TRĒO(s).

Watch video  <https://www.ihearmedical.com/treo-video-2> | 



- Gently **INSERT** the Tip (attached to the TRĒO) into your ear canal (**blue** - left | **red** - right).
- TUCK** the TRĒO behind your ear.
- Gently **PUSH** the Tip into your ear canal to ensure it fits in securely.



- ▶ Too tight? Go down a size. Too loose? Go up a size.
- ▶ Correct Tip size should feel snug but comfortable in the ear.
- ▶ Each ear canal may require different Tip sizes.
- ▶ Feeling too plugged up? Try a Vented Tip.

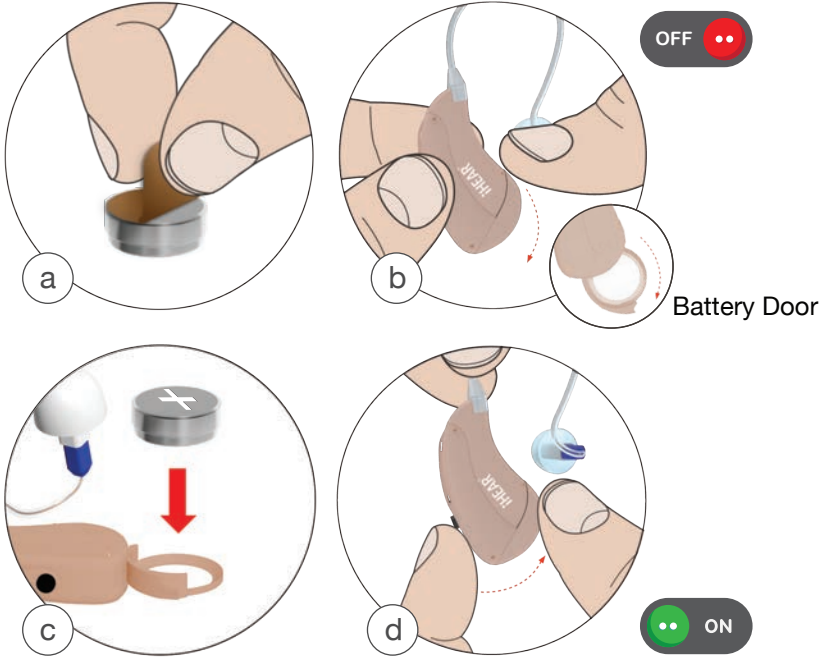
RECORD YOUR TIP SIZE L R

2 Inserting the battery and turning the TRēO On & Off

Watch video



<https://www.ihearmedical.com/treo-video-3>



- PULL** Off Battery Tab
- SWING** OPEN Battery Door - *when open your TRēO is OFF*
- INSERT** Battery with positive (+) side up
- CLOSE** the Battery Door - **your TRēO is ON**

Keep batteries out of children's reach. Contact a medical professional immediately if batteries are swallowed.

iHEAR batteries are available through our on-line store at www.ihearmedical.com or through customer support at 1 (844) IHEAR44 (1-844-443-2744).

3 Remove the TRēO(s) from the ear(s) before proceeding.



TV VOLUME

With the TRēO(s) out of your ear(s) **TURN ON** the TV & **ADJUST** the volume until speech is **relatively loud**.

Now **PLACE** the TRēO(s) on your ear and gently **INSERT** Tip into ear canal.



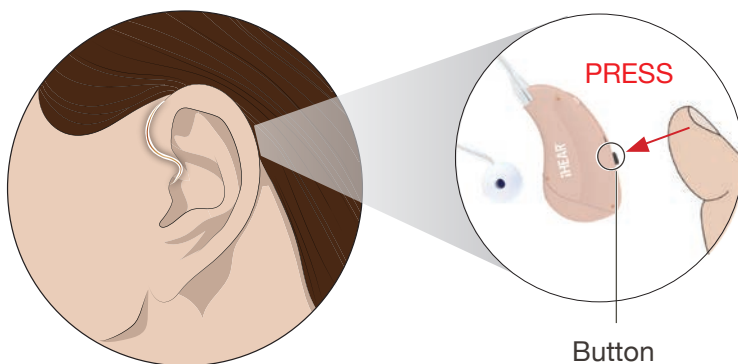
Volume setting will vary depending on your TV.

Easy Setup GUIDE

4 Selecting your Sound Profile

Watch video  <https://www.ihearmedical.com/treo-video-4> 

 Sound Profile#1 is the default



 If you experience feedback, use a larger and Closed Tip only.


PRESS (short press) the button and release to select your Sound Profile. Each press cycles to the next profile, the number of beeps indicate the Sound Profile setting you are in. **SELECT** the Sound Profile with the best clarity, voice intelligibility and overall sound quality. Record your favorite profile number.

PRESS BUTTON TO SELECT SOUND PROFILE		
PROFILE #	SOUND PROFILE	BEEPS
#1	MILD	1
#2	MODERATE	2
#3	HIGH PITCH 1	3
#4	HIGH PITCH 2	4

RECORD YOUR SOUND PROFILE#

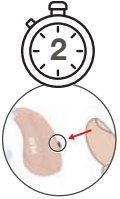
LEFT EAR

RIGHT EAR

 Settings revert to default Sound Profile #1 every time the TRĒO is turned on/off by opening and closing the battery door.

5 Optimizing your Sound Profile Volume

Now that you have selected your Sound Profile, you can adjust the volume in 2-steps for better clarity.



PRESS & Hold 2 Sec

If you experience problems understanding soft speech level, boost your Sound Profile Volume by pressing the button for 2 seconds (long press) until you hear a high frequency beep. Repeat the volume boost for improved loudness and intelligibility. You have a maximum of 2 level boosts. You will hear a tone when the level has successfully boosted. You will hear 3 beeps when maximum volume is reached. To return to default volume boost setting, you must open and close the battery door.

ACTION	FUNCTION
SHORT PRESS	Change sound profile (1-4)
LONG PRESS (2 sec)	Boost Volume

YOUR LEFT EAR SOUND PROFILE# CIRCLE YOUR BOOST LEVEL 0 1 2
 [NO BOOST]

YOUR RIGHT EAR SOUND PROFILE# CIRCLE YOUR BOOST LEVEL 0 1 2
 [NO BOOST]

Left and right may have different boost levels due to different listening preferences.

USE ONLY iHEAR TIPS - DO NOT USE other manufacturer's Tips as they are **NOT COMPATIBLE** with the TRēO.

Tip needs to be replaced after 30 days of use for optimal performance and hygiene.

iHEAR batteries, Cleaning Wipes and Tip replacements are available through our on-line store at www.ihearmedical.com or through customer support at 1 (844) IHEAR44 (1-844-443-2744).